

SHELL & COIL TYPE CONDENSER-RECEIVERS

These redesigned water cooled condenser-receivers are processed to insure cleanliness and reliability. Water circulates through a special finned copper coil. Capacities are conservatively rated.

The receivers are designed with refrigerant rotalock connections. This gives the installer the ability to rotate the position of the fittings on the receiver as he needs for installation. The receiver comes with the rotalock valve and angle adapters, as shown below. However, when ordering the condenser, if a different valve or adapter is needed, they may be exchanged for a different one as shown on our rotalock receiver catalog pages.

All condenser-receivers are complete with our "Leek Pruf" fusible plug and welded mounting brackets. All are pressure tested and UL listed for reliability and all are powder coated for corrosion protection.

The charts and diagrams below show dimensions and specifications.



PART NO.	† TONS	REFRIGERANT INLET		REFRIGERANT OUTLET		WATER CONNECTION	**RECEIVER PUMP DOWN CAPACITY	UL CODE
		FITTING CONNECTION	HORZ. VALVE	FITTING CONNECTION	ANGLE ADAPTER			
5803	1/2	3/4" Rotalock	3/8" I.D. Sweat	1" Rotalock	3/8" I.D. Sweat*	1/2"SAE Fem. Flare	7 lbs.	ON
5806	3/4	1" Rotalock	3/8" I.D. Sweat	1" Rotalock	3/8" I.D. Sweat*	1/2"SAE Fem. Flare	11 lbs.	FN
5802	1	1" Rotalock	3/8" I.D. Sweat	1" Rotalock	3/8" I.D. Sweat*	1/2"SAE Fem. Flare	14 lbs.	FN
5804	1 1/2	1" Rotalock	3/8" I.D. Sweat	1" Rotalock	3/8" I.D. Sweat*	1/2"SAE Fem. Flare	19 lbs.	FN
5808	3	1 1/4" Rotalock	7/8" I.D. Sweat	1 1/4" Rotalock	7/8" I.D. Sweat	3/4"SAE Fem. Flare	30 lbs.	FN
5809	5	1 1/4" Rotalock	7/8" I.D. Sweat	1 1/4" Rotalock	7/8" I.D. Sweat	3/4"SAE Fem. Flare	36 lbs.	FN

**90% AT 90° for R22 and R502 - For R12 and R134a multiply by 1.1 - For R402b and R404a multiply by 0.9
†Tons rating for 105°F condensing temperature

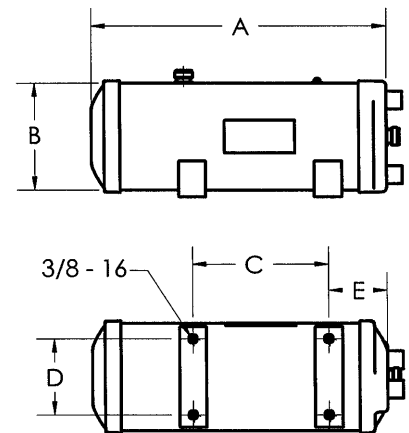
* Also with two 1/4" SAE Connections



File No. SA 2400

PART NO.	DIMENSIONS (INCHES)					WEIGHT LBS.
	(B)	(A)	(C)	(D)	(E)	
5803	5 in.	14	7 1/2	2 1/2	3	18
5806	6 in.	14	7 1/2	4 1/4	3 3/16	22
5802	6 in.	16 1/4	7 1/2	4 1/4	3 3/16	26
5804	6 in.	23 7/8	17 1/4	4 1/4	3 3/16	30
5808*	6 in.	36	29 5/8	4 1/4	3 3/16	49
5809*	6 in.	40	33 5/8	4 1/4	3 3/16	59

*These Parts have different refrigerant locations than shown on diagram.





COAXIAL CONDENSERS

Coaxial water cooled condensers of various configurations are available as shown below. These counterflow condensers provide good performance at a minimum cost. Cataloged or special receivers up through 6" diameter can be provided for use with these condensers as a package for convenient hook-up. Inquiries for special runs are welcomed. All coaxial condensers come complete with brackets.

CE Documentation available upon request.
File No. SA6300



DRAWING NUMBER	TONS	REFRIGERANT CONNECTIONS		WATER CONNECTIONS		OVERALL DIMENSIONS			WEIGHT LBS.
		IN	OUT	IN	OUT	H	L	W	
5027-S	1/3	3/8" I.D.	3/8" I.D.	1/2" I.D.	1/2" I.D.	3"	9 1/4"	6 1/2"	3
5028-S	1/2	3/8" I.D.	3/8" I.D.	1/2" I.D.	1/2" I.D.	3 7/8"	9 1/4"	6 1/2"	5
5022-S	3/4	3/8" I.D.	3/8" I.D.	1/2" I.D.	1/2" I.D.	4 3/4"	9 1/4"	6 1/2"	10
5023-S	1	3/8" I.D.	3/8" I.D.	1/2" I. D.	1/2" I.D.	5"	11"	8 1/2"	12
5024-S	1 1/2	3/8" I.D.	3/8" I.D.	5/8" I.D.	5/8" I.D.	4 1/4"	11 3/4"	10"	14
5025-S	2	1/2" I.D.	1/2" I.D.	5/8" I.D.	5/8" I.D.	5 1/4"	11 3/4"	10"	17
5026-S	3	1/2" I.D.	1/2" I.D.	5/8" I. D.	5/8" I.D.	6 1/2"	12 7/8"	12"	27
8267-S	1	1/4" S.A.E. Flare	1/4" S.A.E. Flare	1/2" I.D.	3/8" N.P.T.	8"	11"	7 3/4"	11
8268-S	2	1/4" S.A.E. Flare	1/4" S.A.E. Flare	1/2" I.D.	3/8" N.P.T.	9.75"	11"	7 3/4"	16

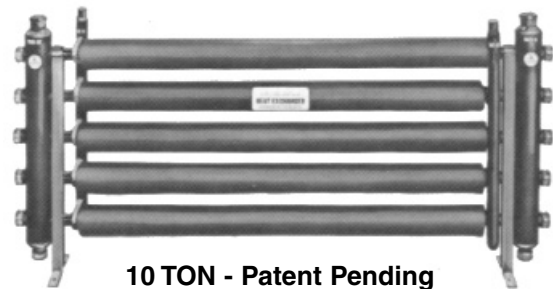
S-steel outer tube with copper inner tube
Copper outer tube available on special order

Dimensions subject to change without notice

DOUBLE WALL CLEANABLE DESUPERHEATING HEAT EXCHANGERS

These practical double wall desuperheating heat exchangers are of non-ferrous construction and provide a new standard of flexibility and convenience.

They are for use where local codes call for double wall type heat exchangers. The entire inner surface is quickly cleaned of water deposits with a wire brush by removing screw caps and standard washers. There are no bolts and gaskets to remove.



10 TON - Patent Pending



1 and 2 TON

PART NUMBER	SYSTEM	MAX. BTU/HR. HEATED	MAX. GAL. TO BE HEATED 100°F	HORIZONTAL TUBES	HEIGHT INCHES	LENGTH INCHES	WEIGHT LBS.
5969	1 ton	2400	2.9	1	4.5"	37"	4
	2 ton	4800	5.8	1	4.5"	37"	4
5975	3 ton	7200	8.7	2	10.5"	37"	9
5976	5 ton	12,000	14.4	3	14.5"	37"	14
5977	7 1/2 ton	18,000	21.5	4	18.5"	37"	19
5978	10 ton	24,000	29.0	5	22.5"	37"	24

